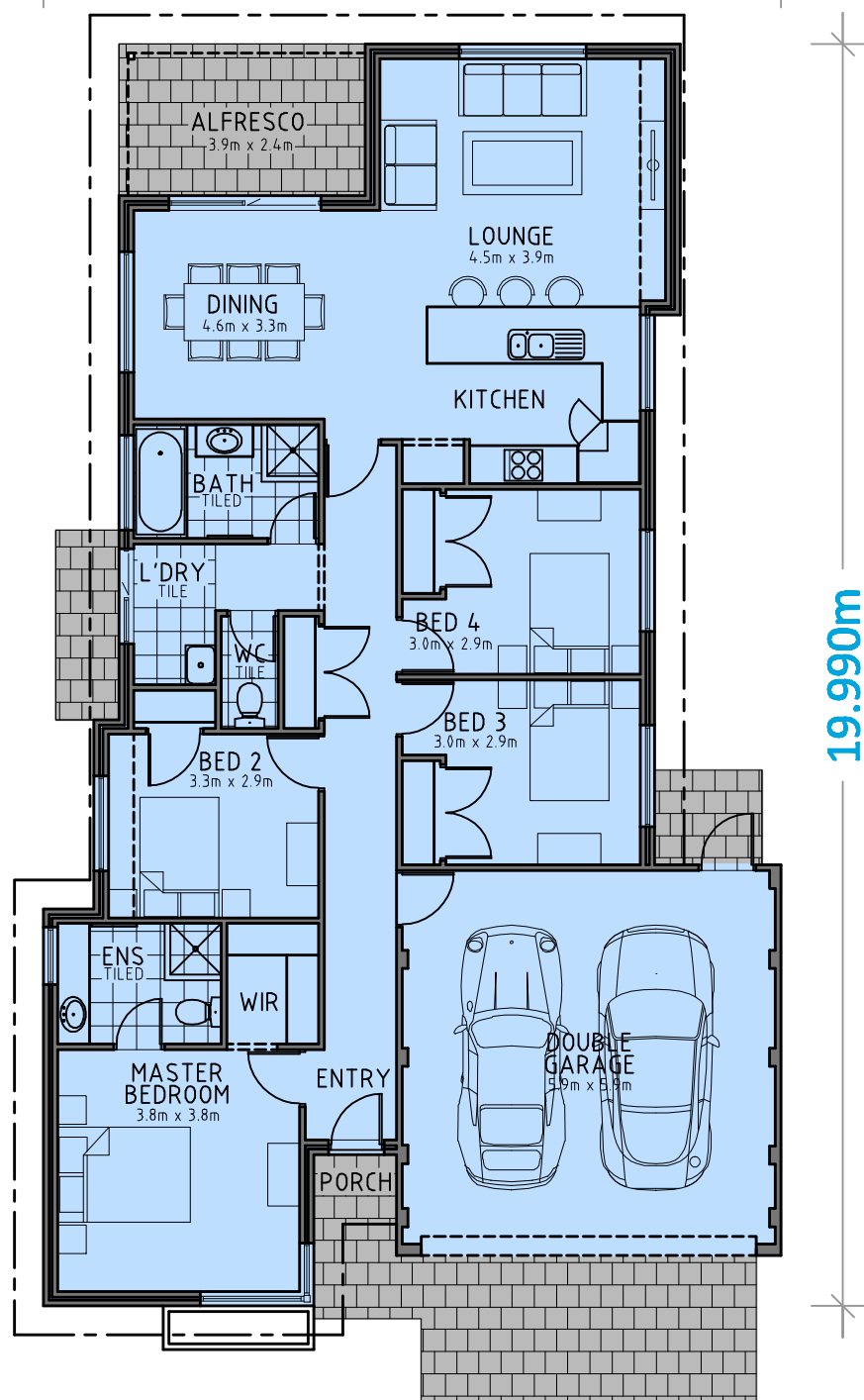


# Point Bouvard Homes.

The Rivers | total area 207m<sup>2</sup> / living area 139m<sup>2</sup>



11.690m



19.990m

4	2	2

Mobile: Byron Lathwell 0411 690 969  
 Ph: 9581 2433  
 Fax: 9581 2488  
 Email: [byronla@optusnet.com.au](mailto:byronla@optusnet.com.au)

**ALL DRAWING, PLANS AND DESIGNS ARE SUBJECT TO COPYRIGHT AND ANY ATTEMPT OR ACTUAL INFRINGEMENT BY USING, REPRODUCING OR COPY THE SAME WHOLLY OR IN PART WITHOUT WRITTEN PERMISSION FROM THE DESIGNER WILL RESULT IN LEGAL PROCEEDINGS**